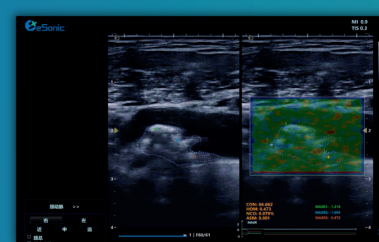
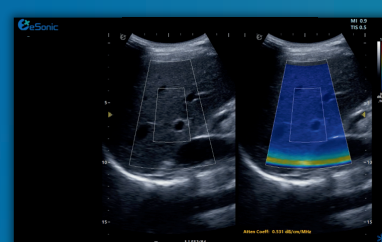
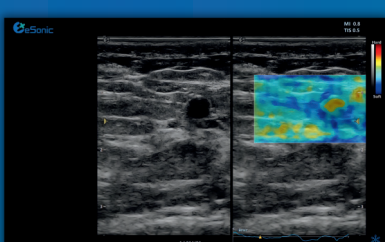
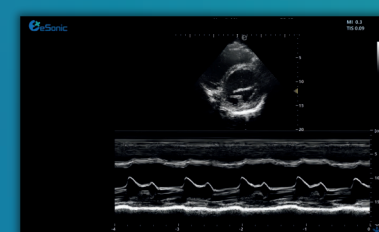
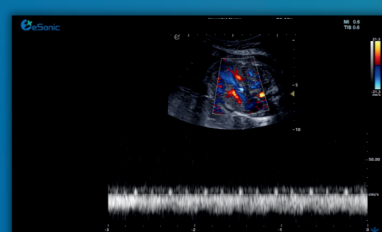
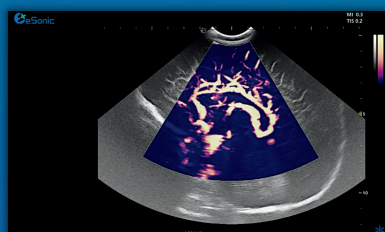
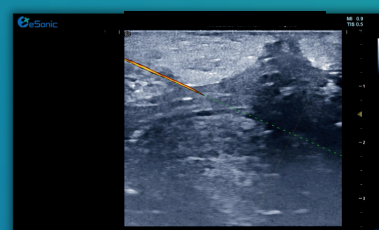
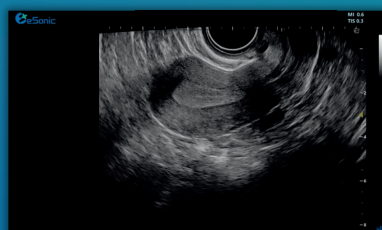


# eHERTZ Series<sup>\*</sup> Ultrasound Systems

## Confident Diagnosis

Ideal for Anesthesia, Breast, Cardiology, Critical Care, Emergency Medicine, Lung, Musculoskeletal (MSK), OB/GYN, Vascular, and more. With advanced computer technology and our proprietary design, from point-of-care to medical imaging centers, the eHertz is changing the way healthcare providers practice medicine.



<sup>\*</sup>The eHertz series includes the eHertz S, eHertz E, and eHertz R

# BIG POWER in a small package

Instant Diagnosis With HD Imaging



mFlow

RVP

RVA

RTE

Needle TS



For me, the eSonic eHertz is about versatility without compromise. It has the function of a high-level ultrasound system with a clearer image than others. It provides more relevant diagnostic information right at the clinician's fingertips.

**Jeremy Bercoff, PhD, eSonic Co-Founder**

# The New Wave in Intelligent Portable Ultrasound

A technological and clinical breakthrough in ultrasound imaging. The eHertz series set new standards for imaging across multiple clinical applications. eSonic's innovations change the ultrasound user experience by transferring all ultrasound intelligence into software.



## RVP

Real-time quantification of the vulnerability of the carotid plaque evaluates the strain generated by the carotid on the plaque, using textural features extraction to assess the risks and probability of its vulnerability.



## RTE

Real-time elastography clearly shows the stiffness of small lesions, providing a better characterization of whether they are benign or malignant.



## RVA

RVA provides a non-invasive assessment of the severity of liver disease, measuring attenuation in the liver.



## mFlow

The combination of ultrasensitive Doppler with improved resolution and unique 3D smart wall filtering creates a new level of performance in microvascularization imaging with linear and curved probes.



The more tools a skilled clinician has in his toolkit, the better he can be. And that's what the eHertz provides — new tools for better diagnostic imaging.

**Jacques Souquet, PhD, eSonic Co-Founder**





# Innovative Ultrasound

eSonic delivers and expands the clinical value of ultrasound imaging and transforms technological innovation into clinical benefits. eHertz architecture will sustain tomorrow's innovations and continue to add clinical value in new domains.



## RawVision Advanced Platform

The eHertz comes with the latest computer technology, along with full software-based beamforming, fewer hard drives, more efficient energy use for a quicker boot-up, and faster rates and processing speeds.

### Additional Features

- Pediatric Cardiology
- CEUS
- Intraoperative Probe

## eSonic Membership Option

Purchase your eHertz outright or join the eSonic Membership for added service and options.

- ✓ Online System Service
- ✓ Online Software Updates
- \$ Options Activation

Future Ready with  
RawVision Imaging  
Power and Smart  
Design

eSonic is committed to becoming an industry leader and innovator. The eHertz suite of products is supported by a world-class team of technical and educational support specialists.

The combination of the latest computer technology, biomarkers, and the RawVision platform delivers an innovative and intuitive system with best-in-class performance.



### Contact Us

[www.esonicimage.com](http://www.esonicimage.com)  
[esonic@esonicimageusa.com](mailto:esonic@esonicimageusa.com)